

# Simple and smart **tabletop robots**

MYSmart™ series MYT10™/MYT50™ tabletop robots



# Introducing the MYT50

## High-performance tabletop robots

The MYSmart MYT50 is designed to tackle complex electronics assemblies. These tabletop robots are highly capable and scalable to meet current and future requirements. From advanced prototyping to batch production, the MYT50 is designed with flexibility and configurability in mind.

### FULL RANGE DISPENSER ON A TABLETOP

The MYT50 comes standard with advanced capabilities, including automated calibration and visual inspection, barcode and fiducial scanning, and z-axis laser height compensation, bringing easy-to-use in-line functionality into a space-saving tabletop format.



### Common applications

- Fingerprint module dispensing
- FPC dispensing
- VCM dispensing
- Underfill
- Encapsulation and glob top
- Edge bonding and sealing
- Corner bonding
- Solder paste dispensing

### Standard configuration

- Three-axis movement
- Camera for fiducials and programming
- Non-contact laser height sensor
- Intelligent valve control
- Barcode via camera for program loading
- Nozzle cleaning
- Computer Controlled

### Configurable options

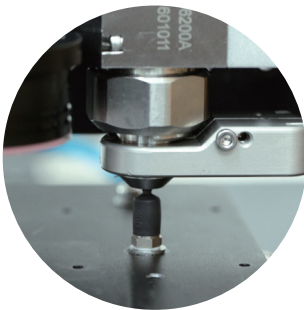
- Low liquid level alarm
- Nozzle Calibration



# MYT50 tabletops

## Capability and flexibility

---



### Nozzle cleaning

- Integrated into the system
- Vacuum for a wide range of fluids
- Suitable for MYT50 machine with jet valve



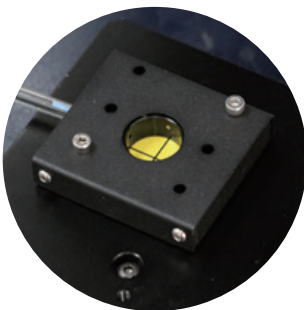
### Laser height detection

- Locates product surface
- Automatic collision avoidance
- Compatible with all Mycronic valves



### Low fluid level detection module (optional)

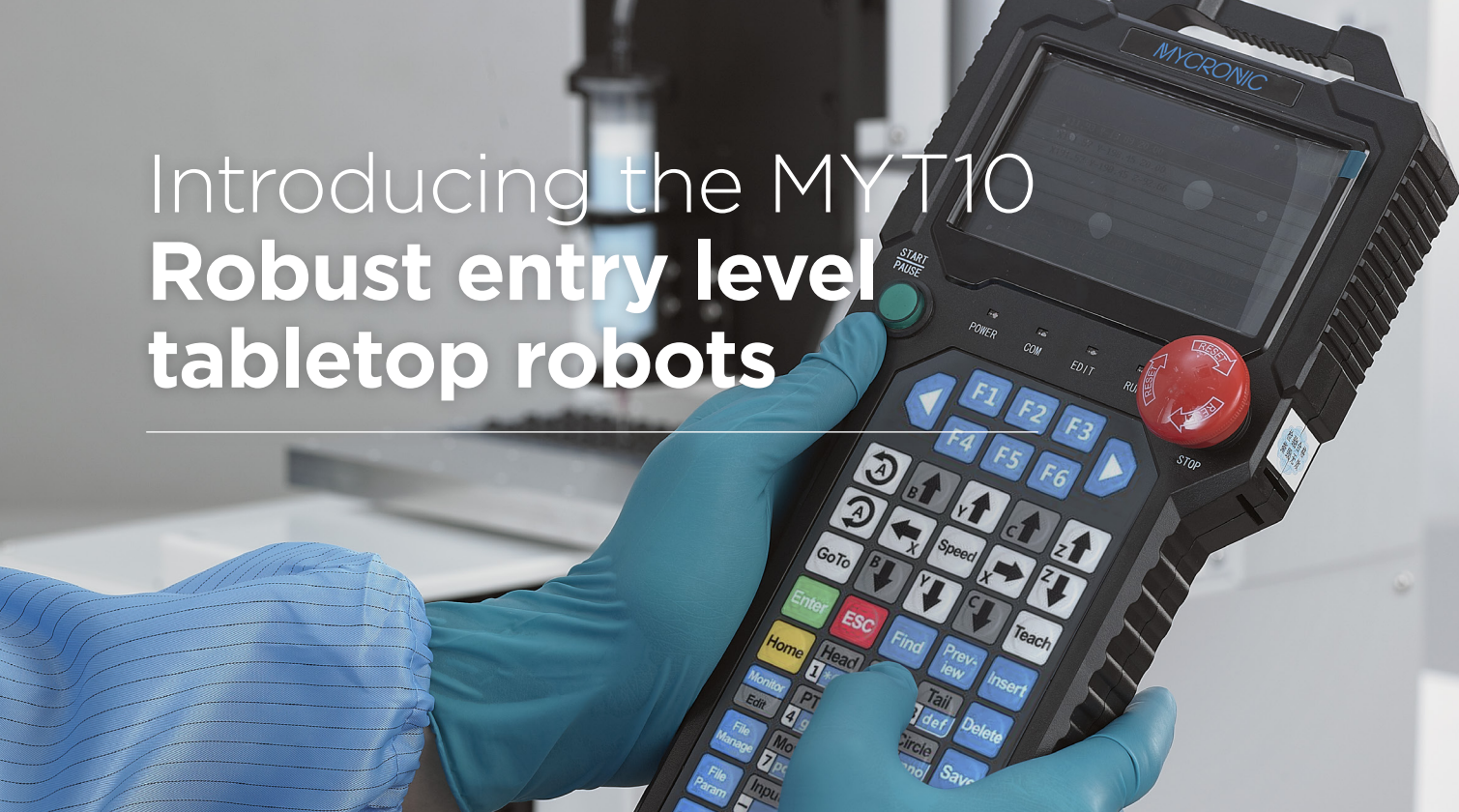
- Alerts operator when new materials are needed
- Alarm when liquid level too low
- Prevents valves from running dry



### Automatic needle calibration module (optional)

- For use on valves with needles
- Simplifies setup and reduces time
- Ensures process repeatability
- Ideal for semi-automatic assembly processes

# Introducing the MYT10 Robust entry level tabletop robots



For small-batch manufacturers, the MYSmart series provides a selection of robust tabletop dispensing robots with varying levels of capabilities.

## INTRODUCING THE MYT10

The semi-automated MYT10 series is well suited for cost-efficient handling of standard electronic and industrial packages, as well as testing, and heat-conductive dispensing. Automatic needle calibration and intelligent valve control help to ensure minimal setup and stoppage times for the most complex program routines.



### Common application

- Adhesive dispensing
- Testing
- Industrial dispensing
- Potting
- Gasketing

### Standard setup

- Three-axis movement
- Intelligent valve control
- Handheld pendant controller
- Bent needle calibration



# Specifications **MYT50** and **MYT10** series

	MYT50S	MYT50M	MYT50L	MYT50 MD	MYT50 LD
Dimension (D x W x H)	606x741x638mm	706x841x638mm	806x941x638mm	706x841x638	806x941x638mm
Axis travel (X x Y x Z/ X x Y1 x Y2 x Z)	300x300x100mm	400x400x100mm	500x500x100mm	400x400x400 x100mm	500x500x500 x100mm
Dispense area (X x Y x Z)	260x260x100mm	360x360x100mm	460x460x100mm	360x360x100mm	460x460x100mm
Machine weight	104kg	126kg	143kg	136kg	114kg
Gantry type	H-Bridge			H-Bridge	
System control	Windows 10 IPC, Axxon/Mycronic software			Windows 10 IPC, Axxon/Mycronic software	
Drive system	AC servo motor and precise ball screw			AC servo motor and precise ball screw	
Work load	10kg			10kg	
Z-axis work load	5kg			5kg	
Max speed	X: 800 Y: 800 Z: 300mm/s			X: 800 Y1: 800 Y2:800 Z: 300mm/s	
Acceleration	0.8g			0.8g	
Repeatability	±10um			±10um	
Memory capacity	256G			256G	
Power	650W, AC 220V, 50/60Hz, 10A			850W, AC 220V, 50Hz, 10A	
Visual system	Industrial CCD			Industrial CCD	
Camera Resolution	0.01x0.01mm (adjustable)			0.01x0.01mm (adjustable)	
Field of View	14x14mm (adjustable)			14x14mm (adjustable)	
Light source	LED			LED	
Optional function	Low fluid level detection module, automatic needle calibration module			Low fluid level detection module, automatic needle calibration module	
Certification	CE			CE	

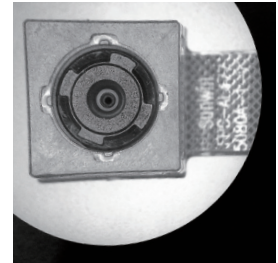
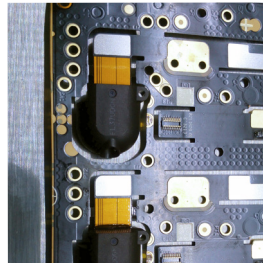
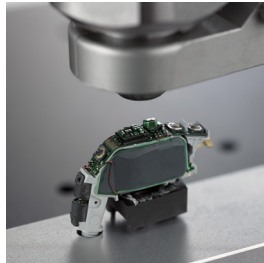
	MYT10S	MYT10M	MYT10L
Dimension (D x W x H)	606x741x638mm	706x841x638mm	806x941x638mm
Axis travel (X x Y x Z)	300x300x100mm	400x400x100mm	500x500x100mm
Dispense area (X x Y x Z)	300x300x100mm	400x400x100mm	500x500x100mm
Machine weight	103kg	125kg	142kg
Gantry type	H-Bridge		
System control	Independent motion controller		
Drive system	AC servo motor and precise ball screw		
Work load	10kg		
Z-axis work load	5kg		
Max speed	X: 800 Y: 800 Z: 300mm/s		
Acceleration	0.8g		
Repeatability	±10um		
Programming	Hand-held programmer		
Memory capacity	128M		
Power	600W, AC 220V, 50/60Hz, 10A		
I/O	8 input/8 output		
Certification	CE		



# Tabletop robot **applications**

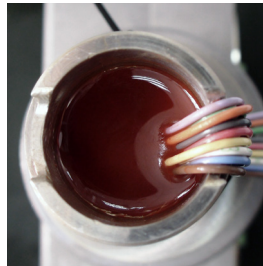
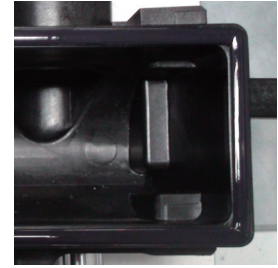
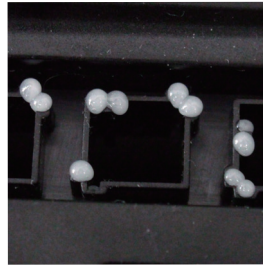
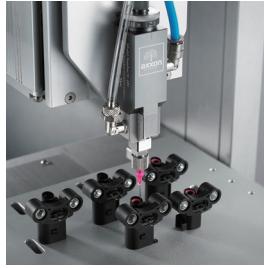
---

## APPLICATIONS IN CONSUMER ELECTRONICS INDUSTRY



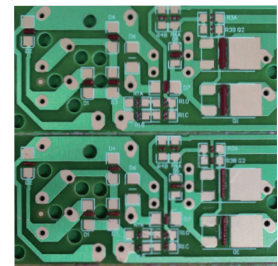
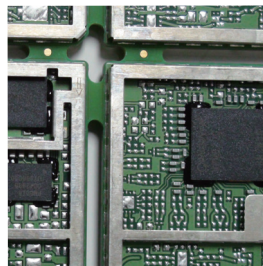
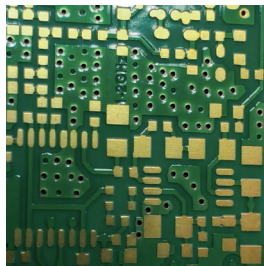
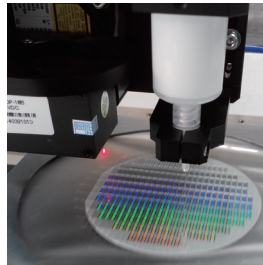
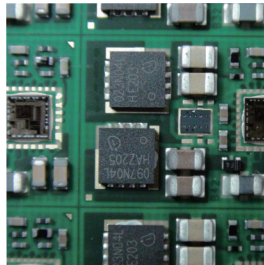
1. Pin encapsulation
2. Hearing aid dispensing
3. Speaker plug dispensing
4. Camera module dispensing
5. Fingerprint recognition module

## APPLICATIONS IN AUTOMOTIVE ELECTRONICS



1. Cylinder cover sealing
2. Connector dispensing
3. Grease dispensing
4. Engine tank dispensing
5. Potting for automotive sensors
6. Fire coil dispensing

## APPLICATIONS IN OTHER INDUSTRIES



1. Test tube dispensing
2. Underfill dispensing
3. Semiconductor bonding
4. LED dispensing
5. Solder paste dispensing
6. Chip corner bonding
7. SMA

# Bringing tomorrow's electronics to life



## CHINA

Axxon Automation Co.,Ltd.  
A14, Silicon Valley Power  
Automotive Innovation Park  
334 Guanlan, Shenzhen, China  
Tel: +86 755 8358 6066

## NETHERLANDS

Mycronic B.V.  
High Tech Campus 10  
5656 AE Eindhoven  
Netherlands

## MEXICO

Mycronic Mexico  
Carretera Guadalajara-Tepic  
No. 7355 Col. San Juan de  
Ocotán in Zapopan  
Jalisco C.P. 45019

## USA

Mycronic Inc.  
554 Clark Road  
Tewksbury, MA 01876  
USA

## USA

US Application Center  
1450 Koll Circle  
San Jose, CA 95112  
USA

Please feel free to contact us if you have further inquiries

Published in Mar. 2024

The contents of this leaflets are subject to change without prior notice.Thanks for your understanding